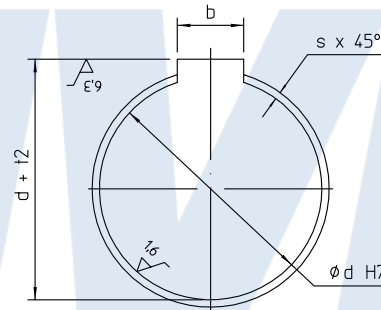
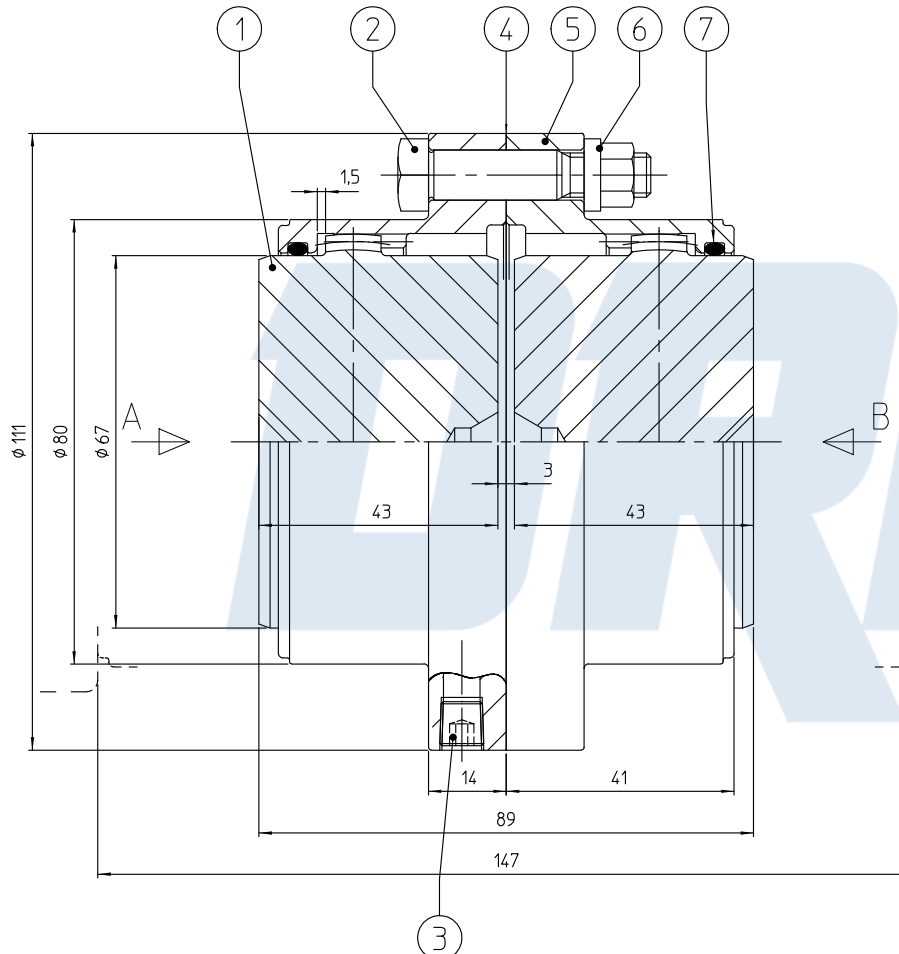


TOOLS	
TOOL NAME	N°

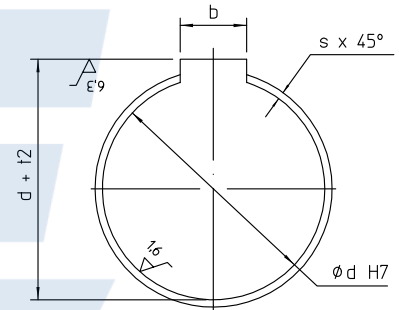


Drive Systems Pty Ltd
 ☎ +61 (0) 3 9796 4800
 @ info@drivesystems.com.au
 📍 8/32 Melverton Drive, Hallam,
 Victoria 3803 Australia
 🌐 drivesystems.com.au
 ABN: 83 836 394 598

Application nominal torque : Nm
 Application peak torque : Nm
 Application nominal speed : rpm
 Application maximum speed : rpm
 Coupling gear max nominal torque capacity : 1300 Nm
 Coupling gear max peak torque capacity : 2600 Nm
 Maximum angular misalignment capacity : 2 x 0,75 degree
 Bore : min 0 mm
 max 50 mm
 Weight : 4,1 kg
 'J' : 0,005 kg m2
 For assembly, operation and maintenance
 see I.M./B400



View A



View B

Item	Qty	Designation	Material	Drawing Nr	Code Nr
7	2	O-ring	Buna	.	111100.020147.000
6	6	Reduced hex. nut	St 12	E-1703	107020.008000.121
5	2	Sleeve	9940300-001	E-1709	449016.045000.003
4	1	Gasket	Paper	E-1712	449016.045000.006
3	4	Plug	St 5,8	.	104906.801000.000
2	6	Fit bolt	St 12,9	.	101609.008040.124
1	2	Hub flex	Ck 45	9940300-004	449016.045000.004

REV.	ZONE	REVISION	DATE	NAME
A		Item 6 quality 12 was 10	27-02-2001	S. C.

Roughness <table border="1"> <thead> <tr> <th>Symbol</th> <th>Ra</th> </tr> <tr> <th>μ inch</th> <th>μ m</th> </tr> </thead> <tbody> <tr> <td>\sim</td> <td>—</td> </tr> <tr> <td>∇</td> <td>252 ∇ 6,3 ∇</td> </tr> <tr> <td>$\nabla\nabla$</td> <td>126 ∇ 3,2 ∇</td> </tr> <tr> <td>$\nabla\nabla\nabla$</td> <td>63 ∇ 1,6 ∇</td> </tr> <tr> <td>$\nabla\nabla\nabla\nabla$</td> <td>31,5 ∇ 0,8 ∇</td> </tr> </tbody> </table>	Symbol	Ra	μ inch	μ m	\sim	—	∇	252 ∇ 6,3 ∇	$\nabla\nabla$	126 ∇ 3,2 ∇	$\nabla\nabla\nabla$	63 ∇ 1,6 ∇	$\nabla\nabla\nabla\nabla$	31,5 ∇ 0,8 ∇	Inertia (J) : <table border="1"> <tr> <td>kg.m2</td> <td>Weight :</td> <td>kg</td> </tr> </table>	kg.m2	Weight :	kg	Scale 1,5 / 1 	Tolerances : Unless otherwise specified Linear : * 0,1mm Angular : * 0°30'	File Nr : Drawn : G. H. Date : 02-05-2000 Meth: Concept: AG Approved: DP	n.v. ESCO TRANSMISSIONS s.a. Culliganlaan, 3 1831 DIEGEM - BELGIUM Tel: 020 7204880 Fax: 020 7212827
Symbol	Ra																					
μ inch	μ m																					
\sim	—																					
∇	252 ∇ 6,3 ∇																					
$\nabla\nabla$	126 ∇ 3,2 ∇																					
$\nabla\nabla\nabla$	63 ∇ 1,6 ∇																					
$\nabla\nabla\nabla\nabla$	31,5 ∇ 0,8 ∇																					
kg.m2	Weight :	kg																				
This design is the exclusive property of N.V. ESCO TRANSMISSIONS S.A. - DIEGEM. It is for internal use only and is not to be reproduced or to be transmitted to others without written consent.				ESCOGEAR FST 45 EM Assembly Format A 2 Drawing Nr 9940300-000 Rev. A																		